

HELTY
Pure air for your home



Flow HRV Systems

2021 Catalogue

Made in Italy 

April 2021

Who is HELTY?

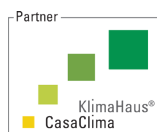
Decentralised HRV, focus on healthy living and energy saving.

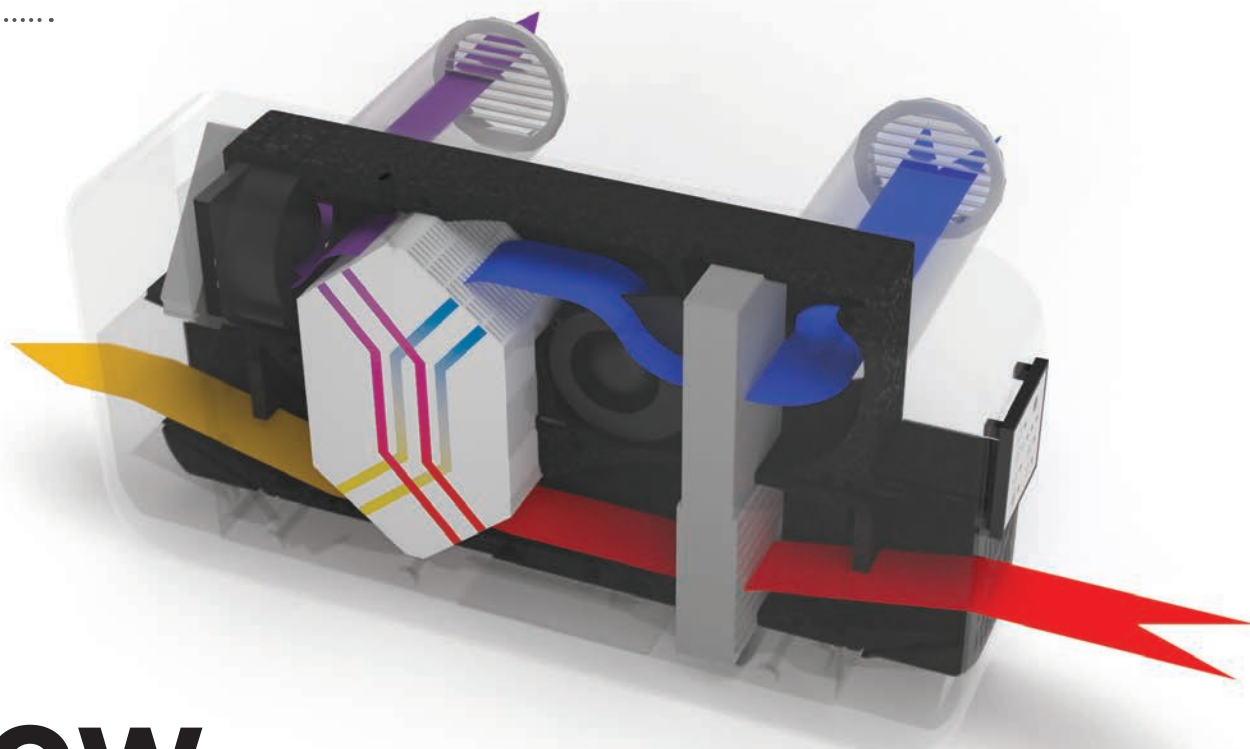
Helty is the Alpac Group company specialised in **decentralised solutions for Controlled Mechanical Ventilation**. We work side by side with heating technicians, planners and system installers, wholesalers of plumbing and heating materials, energy consultants and building health experts to **spread the culture of healthy air in living and working environments**. We deal exclusively with mechanical ventilation controlled mechanical ventilation (HRV) systems with superior air filtration and heat recovery: a **technology**

that is indispensable in energy-efficient buildings and necessary in the field of renovation to **prevent building-related ailments, increase building value and safeguard people's comfort and health**. The HRV solutions developed and produced by Helty entirely in Italy are exclusively of the **dual continuous flow type**: they enable the air in the rooms to be constantly renewed in a balanced manner and with variable flow rates, purifying it of pollutants, pollen and fine dust.

Certifications and partnerships

In homes equipped with Helty ventilation, in addition to comfort, it also improves energy efficiency. The special enthalpy heat recovery unit ensures **thermal recovery performance equal to 91%, as certified by TUV**. The performance of Helty ventilation systems is recognised by the **HRV CasaClima Quality Seal**. The effectiveness of Helty Flow technology in reducing indoor pollutants such as PM10, PM2.5 and VOCs is **scientifically validated by SIMA – the Italian Society of Environmental Medicine**. Helty is a **member of AiCARR, the Italian association of air conditioning heating and refrigeration**, engaged in spreading the culture and techniques for energy, people and the environment.





How it works

- stale indoor air is extracted
- stale air is expelled outside
- fresh outside air is conveyed inside
- intake air is filtered and pre-heated

Helty Flow: continuous air renewal and filtration

All Helty ventilation units are **decentralised HRVs with dual continuous flow** and counter-current crossed airflows. **Stale air, saturated with humidity and CO₂, is extracted from indoor areas** and forced to flow into the heat exchanger where – without contact between the two flows – its heat is transferred to the incoming airflow simultaneously pumped in from outside.

The fresh air, which is richer in oxygen, is **pre-heated and purified** by a high-performance filter that traps smog, particulates and pollen. This technology provides **constant and balanced air exchange** in closed environments, ensuring **superior performance** in terms of energy efficiency, air purification and indoor comfort.

Healthy living and energy saving

Energy saving is optimised by the enthalpy heat exchanger, which **recovers up to 91% of the heat of the expelled air** at the outlet. Performance is certified by TÜV SÜD according to the EN 13141-8 standard. The **F7 filter (ePM 65%)** prevents the entry not only of dust and pollen but also of PM10 and PM2.5 particles, safeguarding the **healthy quality of the air** you breathe in your home. The silent operation and proven noise reduction performance on external building walls contribute to **optimal acoustic comfort**.



Wall-mounted HRV

Point-wise systems for retrofit projects on existing buildings



Flow model	EASY	EASY-UV	PLUS	ELITE
Night function	✓	✓	✓	✓
Hyperventilation	✓	✓	✓	✓
Filter replacement alert	✓	✓	✓	✓
Remote control	✓	✓	✓	✓
Paintable cover	-	✓	-	-
UV-C Lamp	-	-	✓	-
Free Cooling	-	-	✓	✓
On/Off LED panel	-	-	✓	✓
Humidity sensor	-	-	✓	✓
Air Guard App	-	-	✓	✓
Color Trust	-	-	✓	✓
CO ₂ and VOC sensor	-	-	-	✓
LED interface	-	-	-	✓
TÜV tested (std EN 13141-8)	✓	✓	✓	✓



Flow EASY

Compact and functional

Helty FlowEASY is a point-wise controlled residential ventilation system that extracts stale air from indoor environments and introduces new, oxygenated and clean air thanks to dedicated standard-compliant F7+G4 filters. The extremely compact dimensions of Helty FlowEASY make it **suitable for installation even in small spaces. Ideal for a worry-free retrofit.**

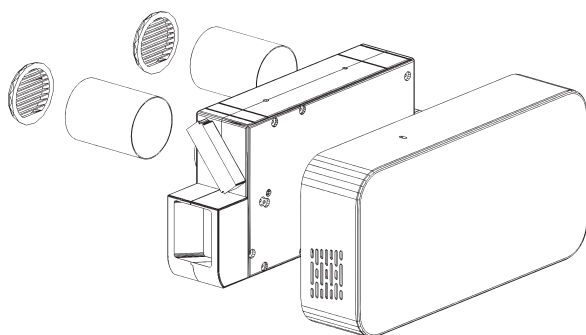
FlowEASY is designed to bring the advantages and comfort of **continuous dual-flow HRV** to individual rooms in lived-in buildings, where it is necessary to ensure an adequate air renewal, even at night thanks to the night mode.

It is ideal for rooms of up to 20 square metres. Installation is quick and easy: **two 8 cm through-holes in the external wall and a power connection** are all that is required. Maintenance is reduced to the bare essentials: simply **replace the filter of each individual unit** when alerted to do so by the panel warning LED – no need to call a service technician.



*Paintable
cover*

Units are also available with a special, paint-ready surface, designed for personalisation and perfect integration into any space or environment.



Thanks to the infrared remote control, it may be easily operated from anywhere in the room.



It is also available with a cover which may be coloured to match any space and environment.



91%

Heat recovery efficiency



18 dB(A)

Sound pressure level



42 m³/h

Maximum airflow



F7+G4

Air intake filtration



-36.7 kWh/m²a

SEC energy consumption (moderate climates)

Technical data

Energy Class

A

Specifications

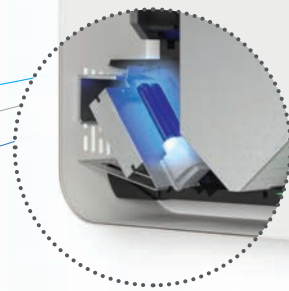
	UoM	Value
Airflow	m ³ /h	10/17/26/37/42 ⁽¹⁾
Airflow adjustment		4 stages + hyperventilation
Power consumption	W	3.6/5.5/9.0/17.5/20.0 ⁽¹⁾
Specific Power Input	W/m ³ /h	0.35/0.32/0.35/0.49/0.48 ⁽¹⁾
Power supply	Vac	230
Operating voltage ⁽²⁾	Vdc	24
Max. current consumption ⁽³⁾	A	0.17
Mass	kg	3
Dimensions (H x W x D)	mm	560 x 280 x 120
Heat exchanger		enthalpy with cross-flow counter flow
Heat recovery efficiency	%	91
Sound power level ⁽⁴⁾	dB(A)	29.5/34.9/42.0/50.7
Sound pressure level ⁽⁵⁾	dB(A)	18.0/23.4/30.5/39.2
Facade noise abatement Dn, e, w	dB	45
Intake and Extraction filters		F7+G4 / G2
Energy class (cold / temperate / hot)		A+ / A / E
SEC (cold / temperate / hot)	kWh/m ² a	-73.8 / -36.7 / -13.3
Unit type		Bidirectional RVU-B
Specific Power Input SPI ⁽⁶⁾	W/m ³ /h	0.35
Internal leakage rate ⁽⁶⁾	%	0.8
External leakage rate ⁽⁶⁾	%	0.9
Airflow sensitivity to pressure variation (+20Pa to -20Pa)		Class S1
Indoor/outdoor air tightness		Class S1

1. In hyperventilation mode

2. The supplied power converter ensures that the unit can run on 230 Vac (to be connected during installation).

3. When powered by 230 Vac.
4. According to UNI 3744: 2010

5. Measured in a 30 m² semi anechoic environment at a distance of 3 m
6. In accordance with EN 13141-8: 2014-09



Flow EASY-UV

*The wall-mounted HRV
that renews and purifies your home's air*

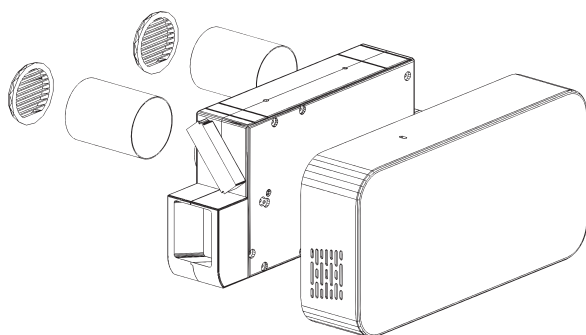
Hely FlowEASY-UV is an **automatic air exchange and sanitising** technology that integrates the advantages of a HRV with the sterilising and microbe-killing power of UV technology. In addition to the dual filter, this unit incorporates a **259 nm UV-C lamp** which uses ultraviolet radiation to combat viruses and volatile substances to purify the air. The high level of purity of the intake air and the abatement of pollutants ensures **a combined action against viruses, bacteria and contaminants**, improving the healthy quality of the confined environment.

The enthalpy heat recovery system optimises **thermal comfort in every season**. The unit **does not require ducting** and can be easily installed on any external wall. Its simplicity of use, compact dimensions and dual ventilation-purification feature make Hely Flow Easy-UV the **all-in-one retrofit solution to increase health and safety** in existing homes.



*Healthy air at home
thanks to UV*

UV lamps are commonly used in hospital settings for their strong germicidal effect. UV-C radiation wavelengths counteract even the smallest microorganisms like viruses, reducing their infectious load and blocking their reproductive cycles.



Thanks to the infrared remote control, it may be easily operated from anywhere in the room.



UV lamps that counter even the smallest microorganisms such as viruses.



91%

Heat recovery efficiency



18 dB(A)

Sound pressure level



42 m³/h

Maximum airflow



F7+G4

Air intake filtration



-36.7 kWh/m²a

SEC energy consumption (moderate climate)

Technical data

Energy Class

A

Specifications

	UoM	Value
Airflow	m ³ /h	10/17/26/37/42 ⁽¹⁾
Airflow adjustment		4 stages + hyperventilation
Power consumption (excluding UV lamp)	W	3.6/5.5/9.0/17.5/20.0 ⁽¹⁾
Specific Power Input (excluding UV lamp)	W/m ³ /h	0.35/0.32/0.35/0.49/0.48 ⁽¹⁾
UV Power consumption	W	7.5
Power supply	Vac	230
Operating voltage ⁽²⁾	Vdc	24
Max. current consumption ⁽³⁾	A	0.83
Mass	kg	3
Product dimensions (horizontal W x H x D)	mm	560 x 280 x 120
Heat exchanger		enthalpy with cross-flow counter flow
Heat recovery efficiency	%	91
Sound power level ⁽⁴⁾	dB(A)	29.5/34.9/42.0/50.7
Sound pressure level ⁽⁵⁾	dB(A)	18.0/23.4/30.5/39.2
Facade noise abatement Dn, e, w	dB	45
Intake and Extraction filters		F7+G4 / G2
Energy class (cold / temperate / hot)		A+ / A / E
SEC (cold / temperate / hot)	kWh/m ² a	-73.8 / -36.7 / -13.3
Unit type		Bidirectional RVU-B
Specific Power Input SPI ⁽⁶⁾	W/m ³ /h	0.35
Internal leakage rate ⁽⁶⁾	%	0.8
External leakage rate ⁽⁶⁾	%	0.9
Airflow sensitivity to pressure variation (+20Pa to -20Pa)		Class S1
Indoor/outdoor air tightness		Class S1

1. In hyperventilation mode

2. The supplied power converter ensures that the unit can run on 230 Vac. (to be connected during installation).

3. When powered by 230 Vac.

4. According to UNI 3744: 2010

5. Measured in a 30 m² semi anechoic environment at a distance of 3 m

6. In accordance with EN 13141-8: 2014-09



Flow PLUS

Automatic and silent

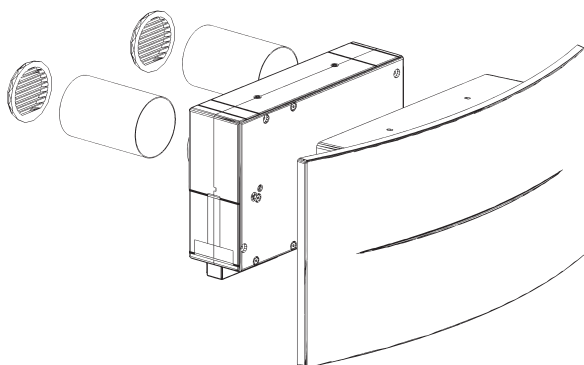
Helty FlowPLUS is a point-wise HRV with dual continuous flow, enthalpy heat recovery and high-performance air filtration. The unit is equipped with a **sensor that monitors the level of humidity in the air and automatically adjusts ventilation to counteract the formation of condensation and mould**. Featuring a **clean minimal design**, it can be easily installed on external walls without invasive renovation work.

Thanks to the enthalpy heat exchanger, the system recovers up to 91% of the heat of the outgoing air, using it to heat the incoming air before introducing it into the rooms. With a **sound pressure level of 18 dB at minimum speed**, it is incredibly quiet. It is imperceptible even during sleeping hours thanks to the night function.



Humidity under control.

In addition to the panel interface and remote control, the unit can be managed via smartphone using the **Air Guard app**, which enables you to adjust its operation and monitor the temperature and humidity levels in your home.



Humidity sensor for automatic ventilation regulation.



Thanks to the infrared remote control, it may be easily operated from anywhere in the room.



91%

Heat recovery efficiency



18 dB(A)

Sound pressure



42 m³/h

Maximum airflow



F7+G4

Air intake filtration



-36.7 kWh/m²a

SEC energy consumption (moderate climate)

Technical data

Energy Class

A

Specifications

	UoM	Value
Airflow	m ³ /h	10/17/26/37/42 ⁽¹⁾
Airflow adjustment		4 stages + hyperventilation
Power consumption	W	3.6/5.5/9.0/17.5/20.0 ⁽¹⁾
Specific Power Input	W/m ³ /h	0.35/0.32/0.35/0.49/0.48 ⁽¹⁾
Power supply	Vac	230
Operating voltage ⁽²⁾	Vdc	24
Max. current consumption ⁽³⁾	A	0.17
Mass	kg	6
Product dimensions (horizontal W x H x D)	mm	695 x 353 x 152
Heat exchanger		enthalpy with cross-flow counter flow
Heat recovery efficiency	%	91
Sound power level ⁽⁴⁾	dB(A)	29.5/34.9/42.0/50.7
Sound pressure level ⁽⁵⁾	dB(A)	18.0/23.4/30.5/39.2
Facade noise abatement Dn, e, w	dB	45
Intake and Extraction filters		F7+G4 / G2
Modbus RTU rs485		Yes ⁽⁶⁾
Energy class (cold / temperate / hot)		A+ / A / E
SEC (cold / temperate / hot)	kWh/m ² a	-74.1 / -37.9 / -14.6
Unit type		Bidirectional RVU-B
Specific Power Input SPI ⁽⁷⁾	W/m ³ /h	0.35
Internal leakage rate ⁽⁷⁾	%	0.8
External leakage rate ⁽⁷⁾	%	0.9
Airflow sensitivity to pressure variation (+20Pa to -20Pa)		Class S1
Indoor/outdoor air tightness		Class S1

1. In hyperventilation mode

2. The supplied power converter ensures that the unit can run on 230 Vac. (to be connected during installation).

3. When powered by 230 Vac.

4. According to UNI 3744: 2010

5. Measured in a 30 m² semi anechoic environment at a distance of 3 m

6. This excludes control via the interface panel

7. In accordance with EN 13141-8: 2014-09



Flow ELITE

Elegant and smart

FlowELITE is equipped with a humidity sensor, CO₂ and VOC sensors, 'Color Trust' technology, LED lighting kit, mobile app control.

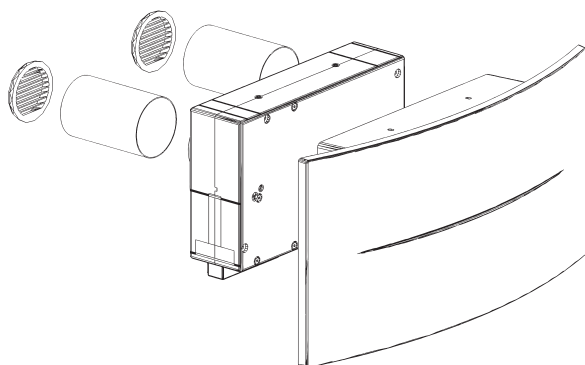
Like the other Flow models, it ensures superior heat recovery and pollutant filtration performance, also adding advanced features that enable it **to blend into room decor, providing comfort and well-being.**

The design cover incorporates **dimmable and timer-controlled LEDs on the sides** to create atmospheric accessory lighting, particularly suitable for living room installations. Operation is automatically regulated by the **humidity, CO₂ and VOC sensors**, to prevent excessive pollutant concentrations, increase air renewal and improve oxygenation.



*Healthy air within
reach of your app*

The 'Color Trust' light sensor **indicates the air quality in the home**, intuitively informing you when indoor pollutant levels are acceptable or too high. The Air Guard app makes the HRV even easier to use by providing **integrated management of controlled mechanical ventilation systems** and also providing air quality level readings detected by sensors.



Sensors for automatic control of humidity, CO₂ levels and VOCs



Thanks to the infrared remote control, it may be easily operated from anywhere in the room.



Dimmable LED lighting kit.



91%

Heat recovery efficiency



18 dB(A)

Sound pressure level



42 m³/h

Maximum airflow



F7+G4

Air intake filtration



-36.7 kWh/m²a

SEC energy consumption (moderate climate)

Technical data

Energy Class

A

Specifications	UoM	Value
Airflow	m ³ /h	10/17/26/37/42 ⁽¹⁾
Airflow adjustment		4 stages + hyperventilation
Power consumption (excluding LED lighting)	W	3.6/5.5/9.0/17.5/20.0 ⁽¹⁾
Specific Power Input (excluding LED lighting)	W/m ³ /h	0.35/0.32/0.35/0.49/0.48 ⁽¹⁾
LED consumption	W	12
Power supply	Vac	230
Operating voltage ⁽²⁾	Vdc	24
Max. current consumption ⁽³⁾	A	0.35
Mass	kg	6
Product dimensions (horizontal W x H x D)	mm	695 x 353 x 152
Heat exchanger		enthalpy with cross-flow counter flow
Heat recovery efficiency	%	91
Sound power level ⁽⁴⁾	dB(A)	29.5/34.9/42.0/50.7
Sound pressure level ⁽⁵⁾	dB(A)	18.0/23.4/30.5/39.2
Facade noise abatement Dn, e, w	dB	45
Intake and Extraction filters		F7+G4 / G2
Modbus RTU rs485		Yes ⁽⁶⁾
Energy class (cold / temperate / hot)		A+ / A / E
SEC (cold / temperate / hot)	kWh/m ² a	-74.1 / -37.9 / -14.6
Unit type		Bidirectional RVU-B
Specific Power Input SPI ⁽⁷⁾	W/m ³ /h	0.35
Internal leakage rate ⁽⁷⁾	%	0.8
External leakage rate ⁽⁷⁾	%	0.9
Airflow sensitivity to pressure variation (+20Pa to -20Pa)		Class S1
Indoor/outdoor air tightness		Class S1

1. In hyperventilation mode

2. The supplied power converter ensures that the unit can run on 230 Vac. (to be connected during installation).

3. When powered by 230 Vac.

4. According to UNI 3744: 2010

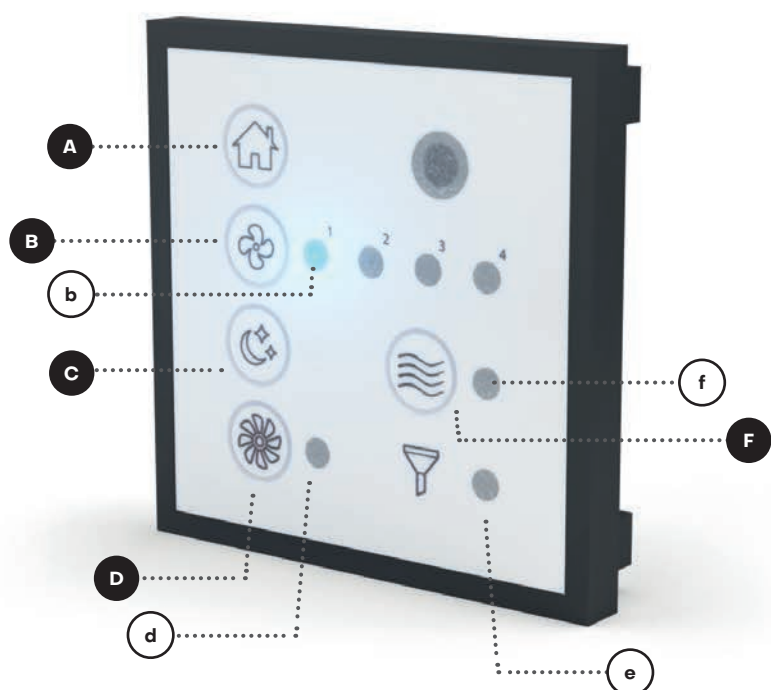
5. Measured in a 30 m² semi anechoic environment at a distance of 3 m

6. This excludes control via the interface panel

7. In accordance with EN 13141-8: 2014-09

Control panel

Ultimate ease of use



Pos.	Description
A	Timer On/Off ⁽¹⁾ and LED dimmer ⁽²⁾
B	Ventilation adjustment
b	Fan speed LED
C	Night mode
D	Hyperventilation
d	Hyperventilation function LED
e	Filter replacement alert LED
F	Free Cooling ⁽³⁾
f	Free cooling function LED

1. Available on FlowEASY
2. Available on FlowELITE
3. Available for all models except FlowEASY

The control panel is present in all Flow models except Flow800 and FlowM800, which have a remote control panel.

Functions



HRV On/Off and LED dimmer: it activates the automatic shutdown timer function⁽¹⁾. It enables you to turn on the LEDs and adjust their intensity⁽²⁾.



Ventilation adjustment: it enables you to set the 4 different air renewal speeds according to the room's ventilation requirements.



Night mode: HRV fan speed and LED brightness are reduced to minimum, providing continuous and silent air renewal and ensuring high-quality rest. Keeping the button pressed completely deactivates the LEDs.



Hyperventilation: airflow is boosted to the maximum for faster air renewal and forced room ventilation for short periods.



Free Cooling/Free Heating: an intelligent technology that provides natural indoor cooling: if the outside air has a lower temperature than inside, the HRV suspends the heat recovery function before air is introduced into the room, thus maintaining optimal thermal conditions. This way, naturally fresh air is conveyed indoors to create a natural air conditioning effect. This technology is particularly beneficial during summer nights and between seasons when outdoor temperatures are more agreeable. Conversely, with Free Heating you can take advantage of the warmer air outside between seasons or on warm winter days.



Filter replacement alert: this warns you when it is time to replace the filter to safeguard the unit's operational performance.

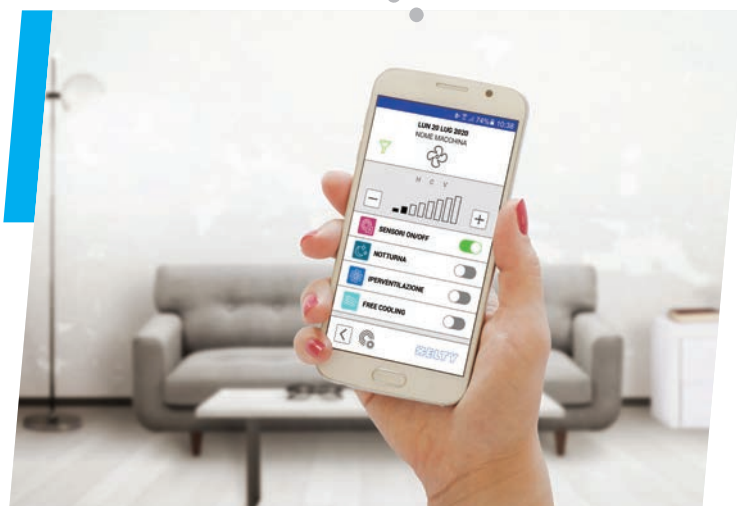
App Air Guard

For smart management!



The Hely Air Guard Smart App is designed for the integrated management of Hely Controlled Mechanical Ventilation systems; with the possibility of differentiating the management of the air renewal in each room. The system is compatible with smartphones and tablets,

for maximum comfort in just one touch. The user-friendly interface makes using the Hely Smart App easy and intuitive and provides information about indoor air quality, indicating current values of humidity, temperature, VOC concentration and CO₂* levels.

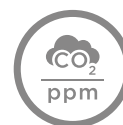


Download Hely App

The Hely Air Guard App is available on the Apple Store for IOS operating system devices and on the Google Play Store for Android users.



No internet connection is required once you have download the App; it works within the perimeter of the home.



It indicates air quality data: humidity, temperature, VOC and CO₂*



It enables all HRVs to be controlled simultaneously.

*if the HRV units are equipped with sensors